

Flexi Charger Multibank Battery Chargers

A range of chargers designed to be flexible to user needs in a busy workshop or multi battery environment

1x Flexi Multibank charger is made up of charger cells that can be used individually, in groups, or as full combination

- Range includes 4 way / 6 way / 8 way / 10 way charging options
- Up to 20amp per charge cell
- 6/12/24/36/48v Modules
- SLA / Lithium combinations

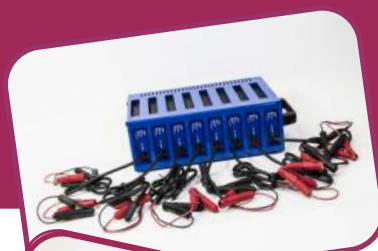


KEY FEATURES

- Specific charging profiles with up to 8 phases
- Soft-start phase to protect against plate warp in deeply discharged batteries
- Automatic charge restart function used to maintain battery in fully charged state
- High frequency switching technology for best performance and efficiency
- LEDs to indicate operation and charging status
- Overload-, reverse polarity- and short circuit protection
- Power de-rating at elevated environmental temperature
- Wide range input 100-240V, 50-60Hz
- Over current control protection against high current demand during charging

OPTIONS

- External battery temperature sensor
- LED Ladder charger load display, shows work being done by charger
- LCD Battery Voltage Display
- % Charge Progress Display
- Bespoke Charge Stages



Additional 45mm for Handle				
Case Size	Width	Depth	Height	Weight
4 way	132mm	245mm	190mm	5.7kg
6 way	132mm	245mm	275mm	8.5kg
8 way	132mm	245mm	365mm	11.5kg
10 way	132mm	245mm	455mm	14.25kg

Sales Office

☎ 01225 791805 ✉ sales@exegon.com

Exegon Ltd, 1-3 Poulsons Yard, Strattons Walk, Melksham, Wiltshire, SN12 6JL • Opening Hours: 8:30am - 5:30am Mon-Fri